

Revenue Trends and other Policy Thoughts

John W. Sipple, PhD

Associate Professor

Department of Development Sociology

Co-Faculty Director, CaRDI (Community & Regional Development Institute)

Cornell University

STATE OF NEW YORK CITIES: Creative Responses to Fiscal Stress

March 25, 2014

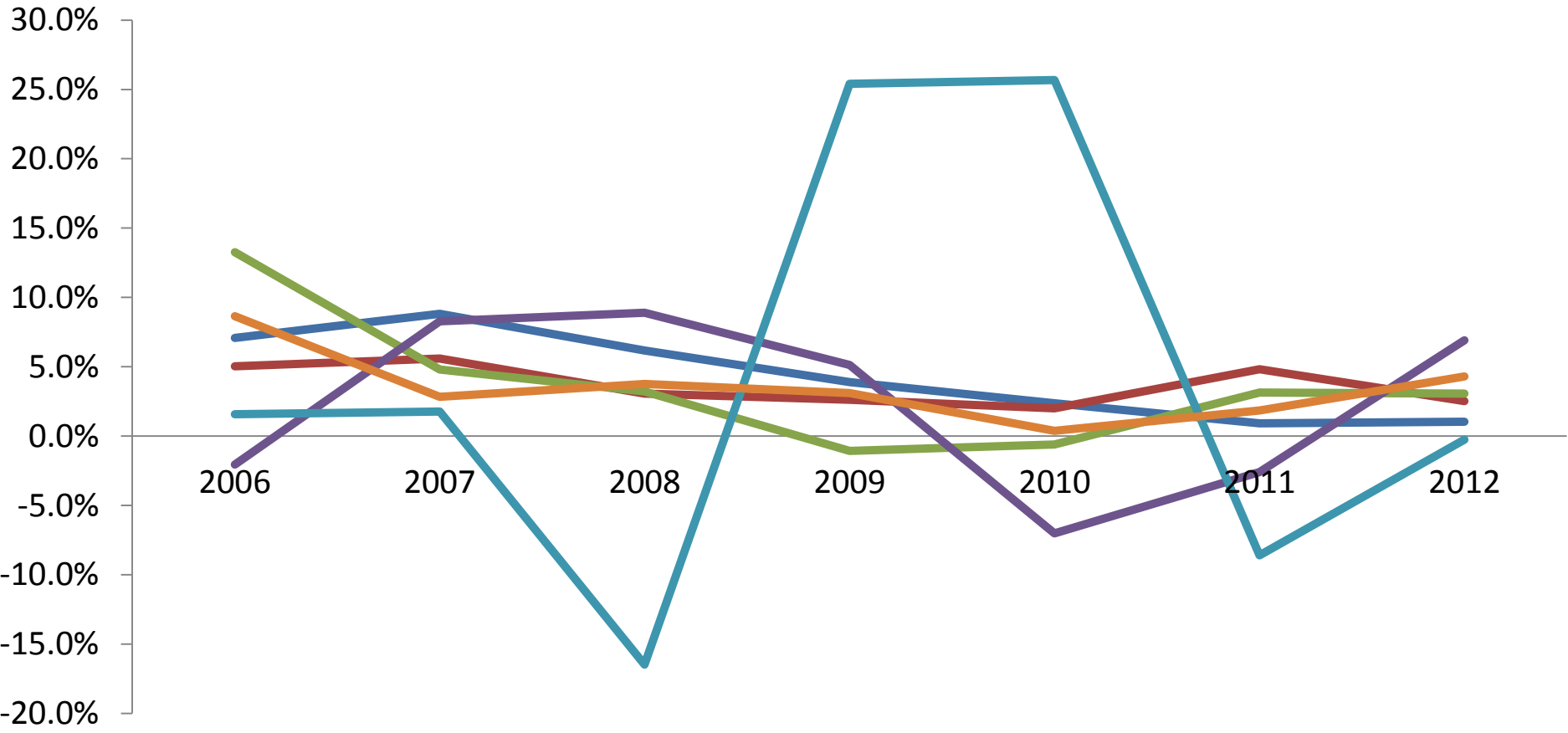


Key Themes

1. Caught between cuts in state aid and constraint of property tax cap
2. Variation across cities in need and impact of state aid and tax cap
3. Regional response and analysis
4. Programmatic vs. Financial insolvency

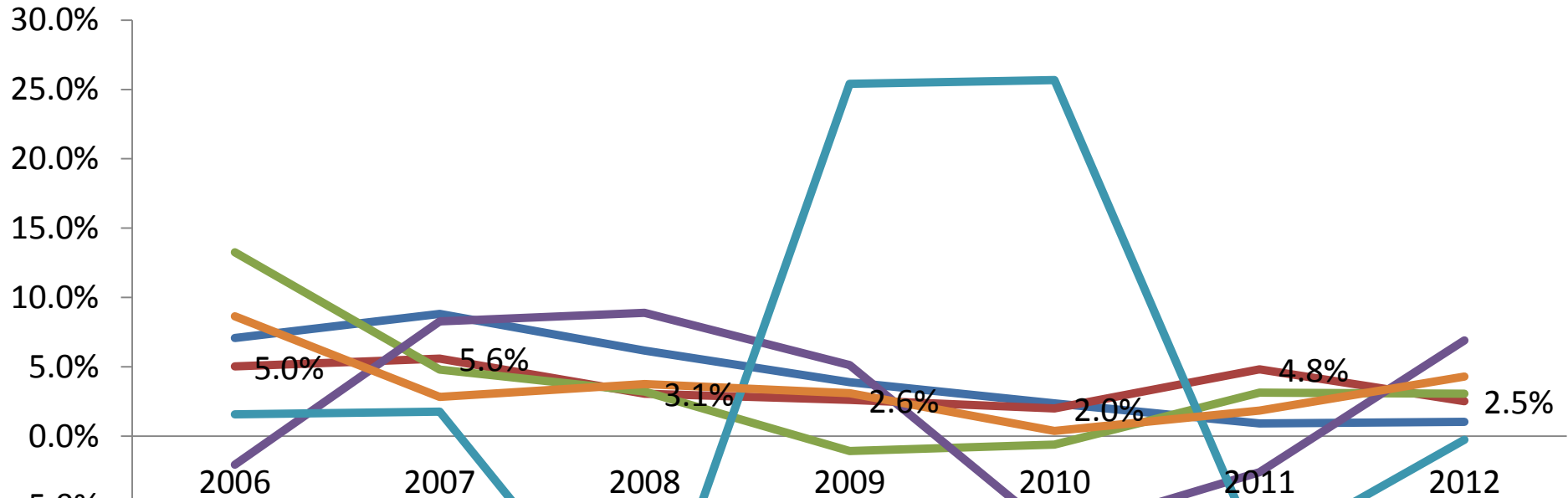
% Annual Change by Aid Type

Full Value Tax Levy Local Rev State Aid Federal Aid Tot Expenditures



% Annual Change by Aid Type

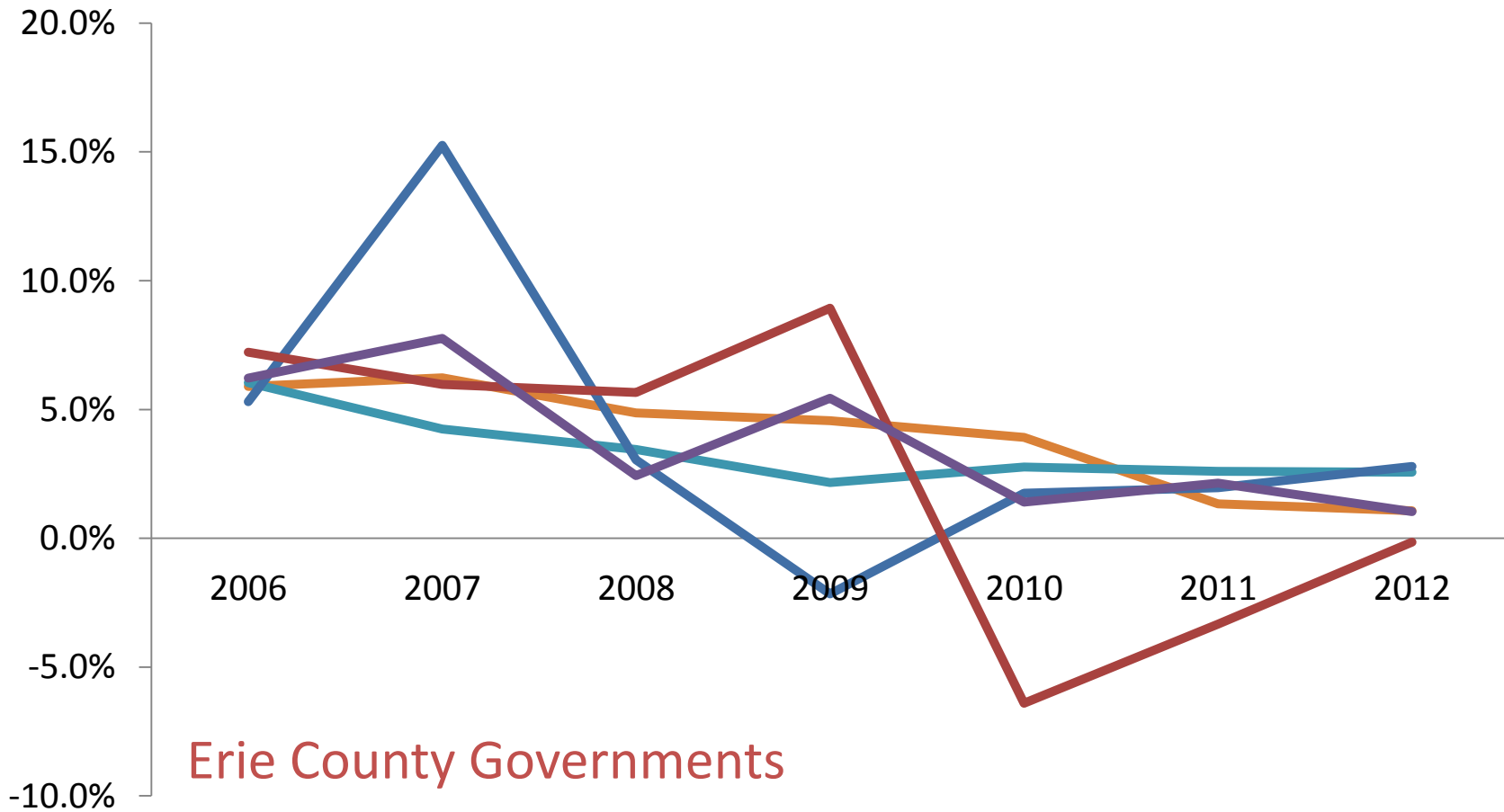
Full Value Tax Levy Local Rev State Aid Federal Aid Tot Expenditures



Onondaga County Governments

% Change by Aid Type - no Fed

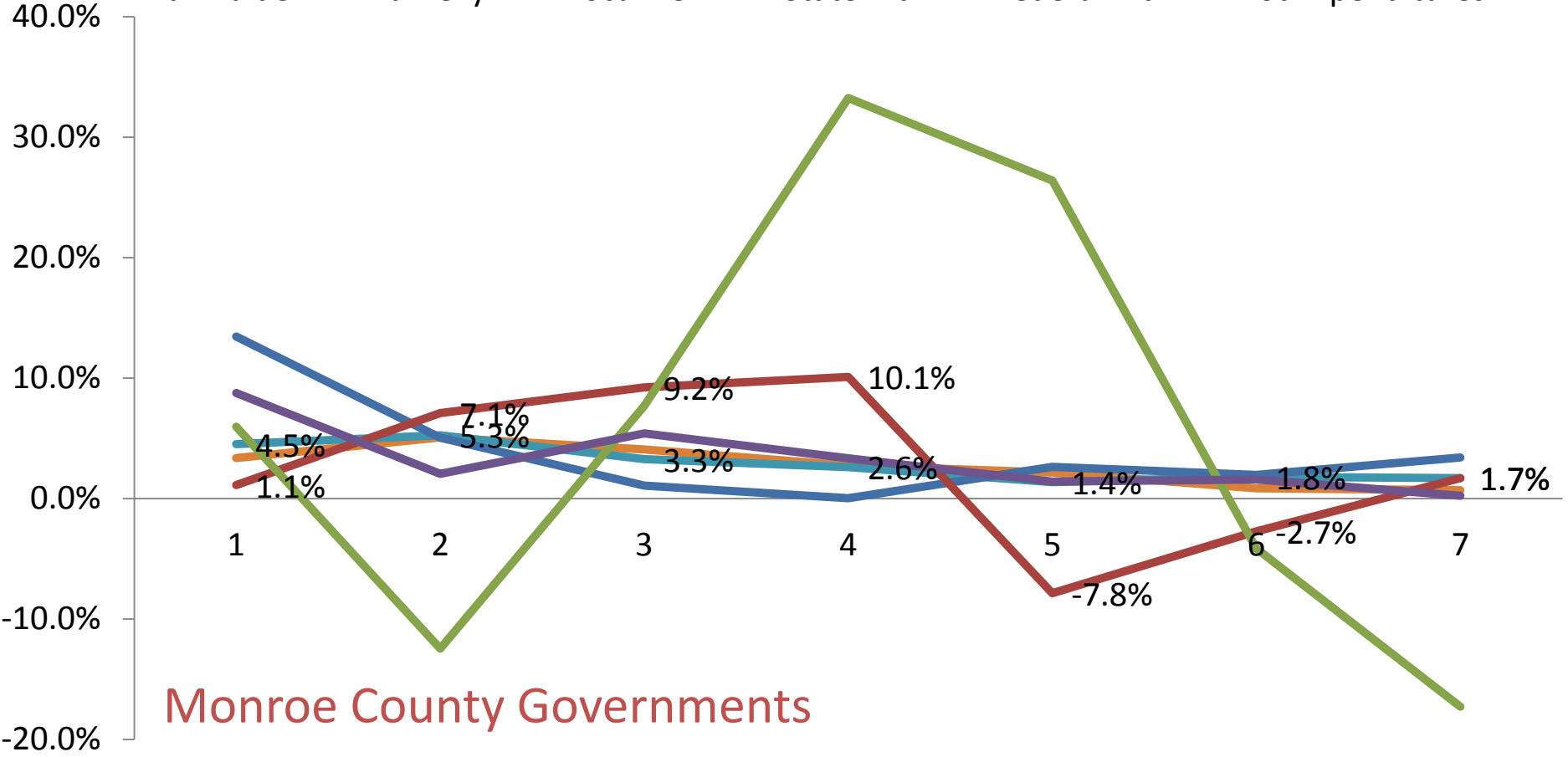
Full Value TaxLevy Local Rev State Aid Tot Expenditures



Erie County Governments

% Change by Aid Type and Levy

Full Value Tax Levy Local Rev State Aid Federal Aid Tot Expenditures

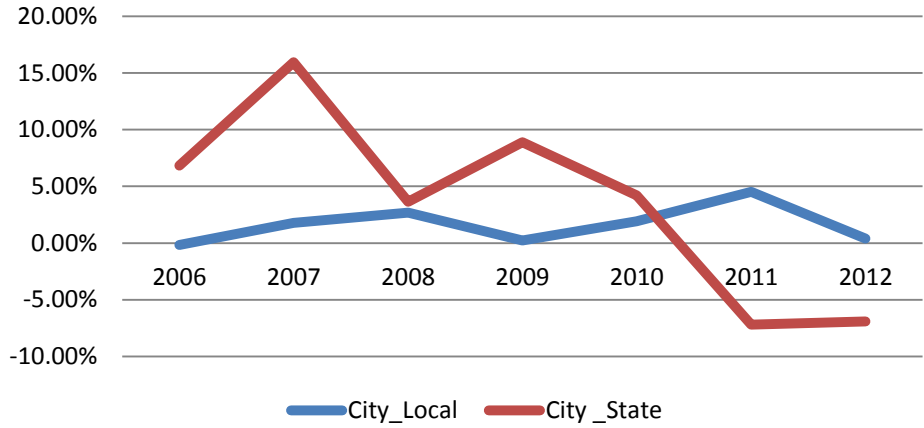


Monroe County Governments

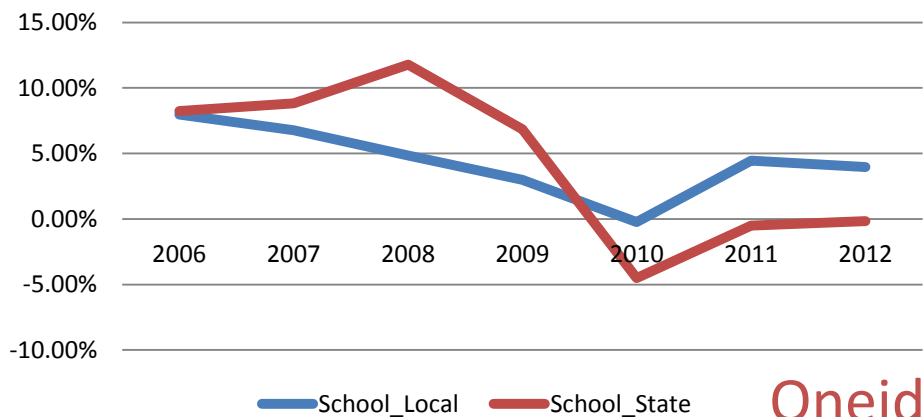
% Change Governments in County



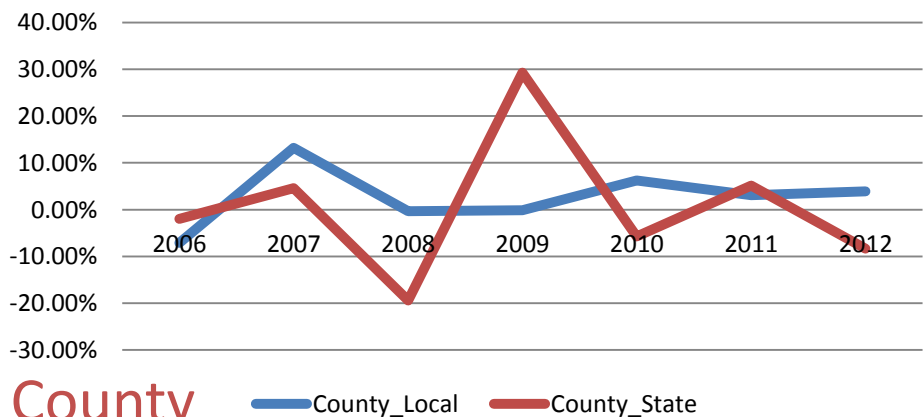
% Change Cities in County



% Change School Districts



% Change County Government

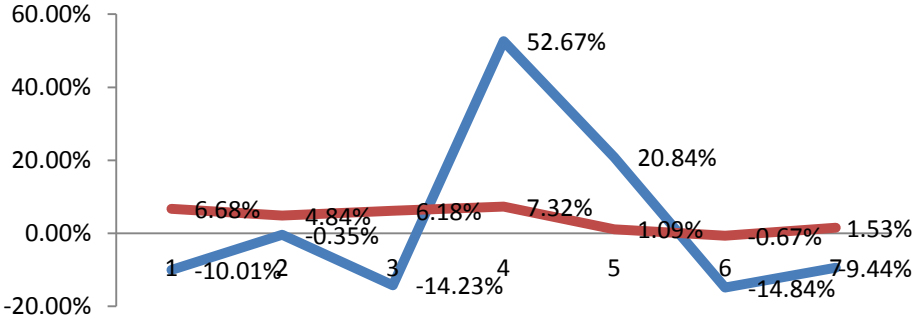


Oneida County

County_Local County_State

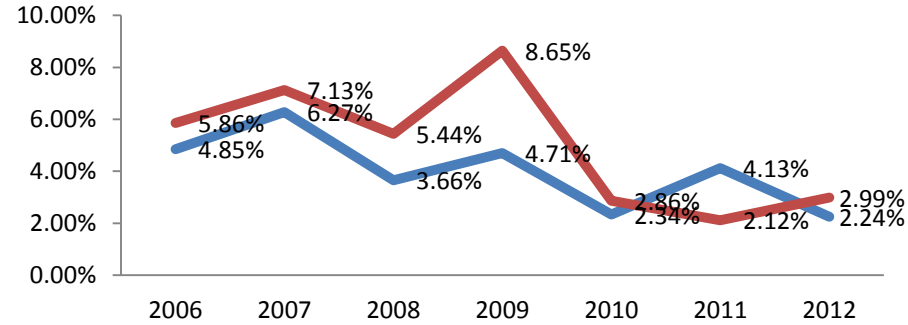
Steuben County Cities

City_Local City_State



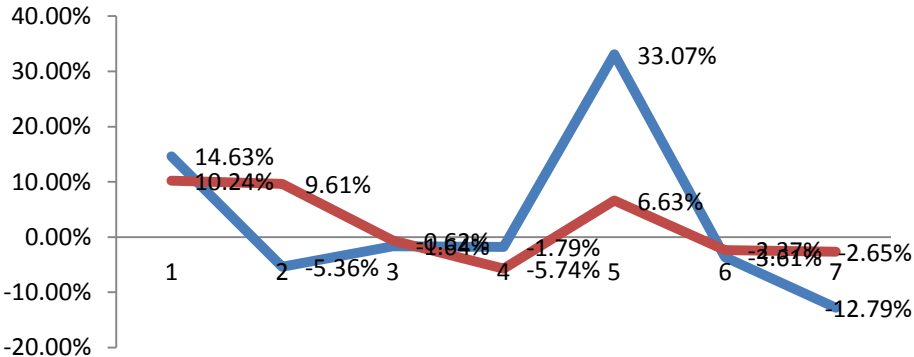
Steuben County School Districts

School_Local School_State



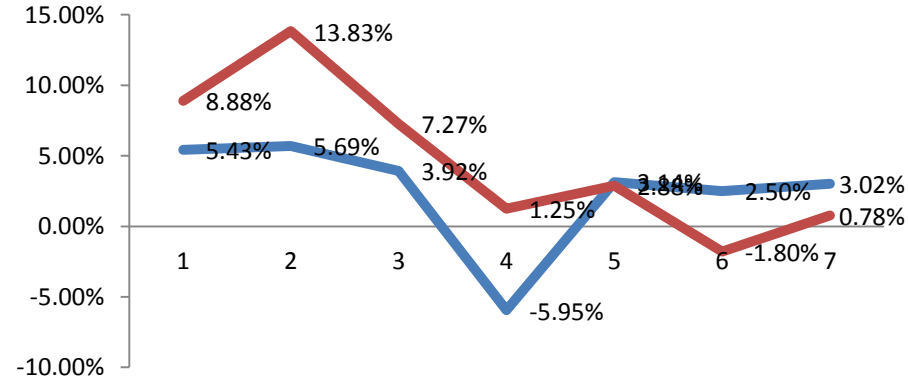
Tompkins County Cities

City_Local City_State

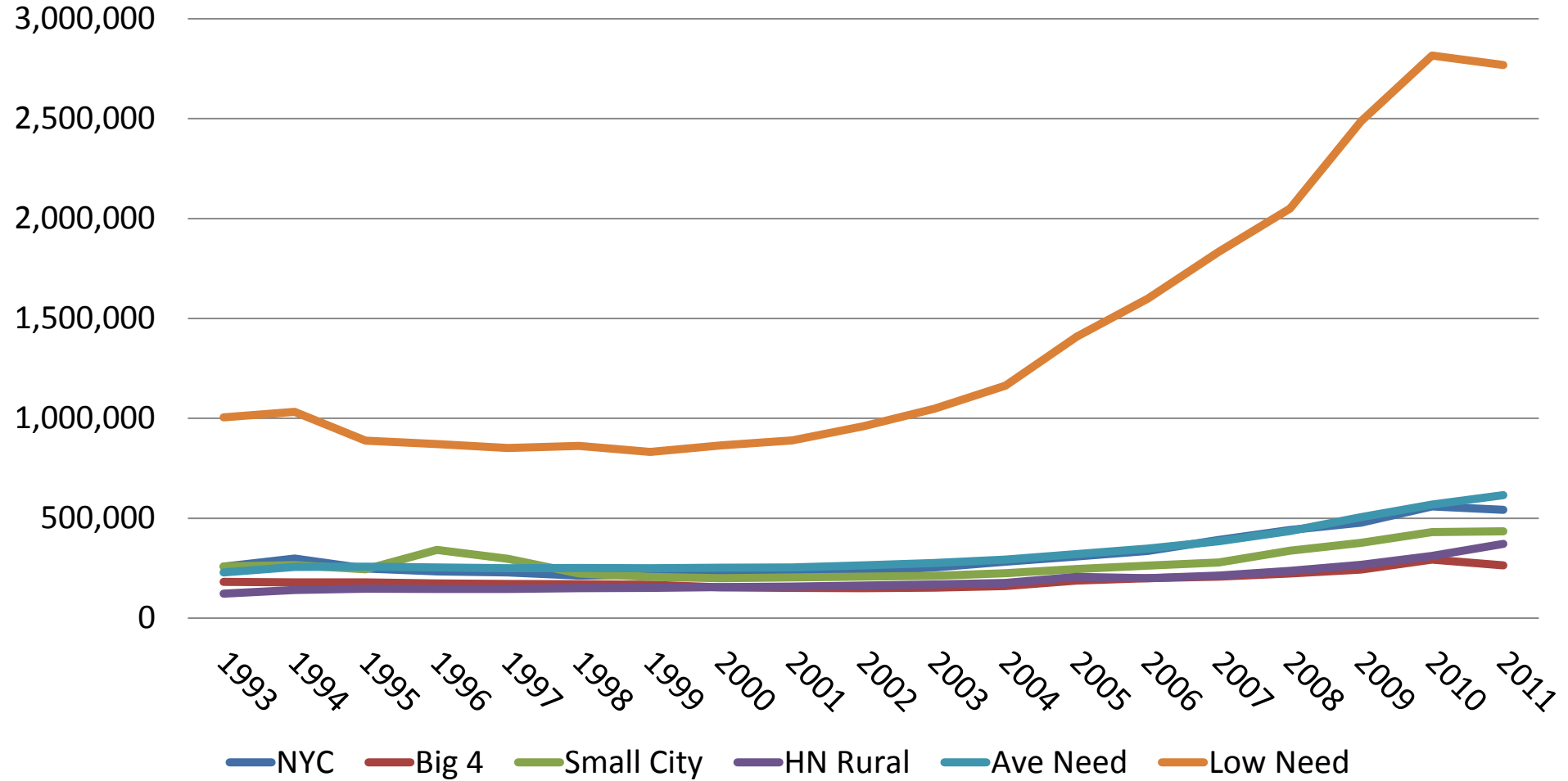


Tompkins School Districts

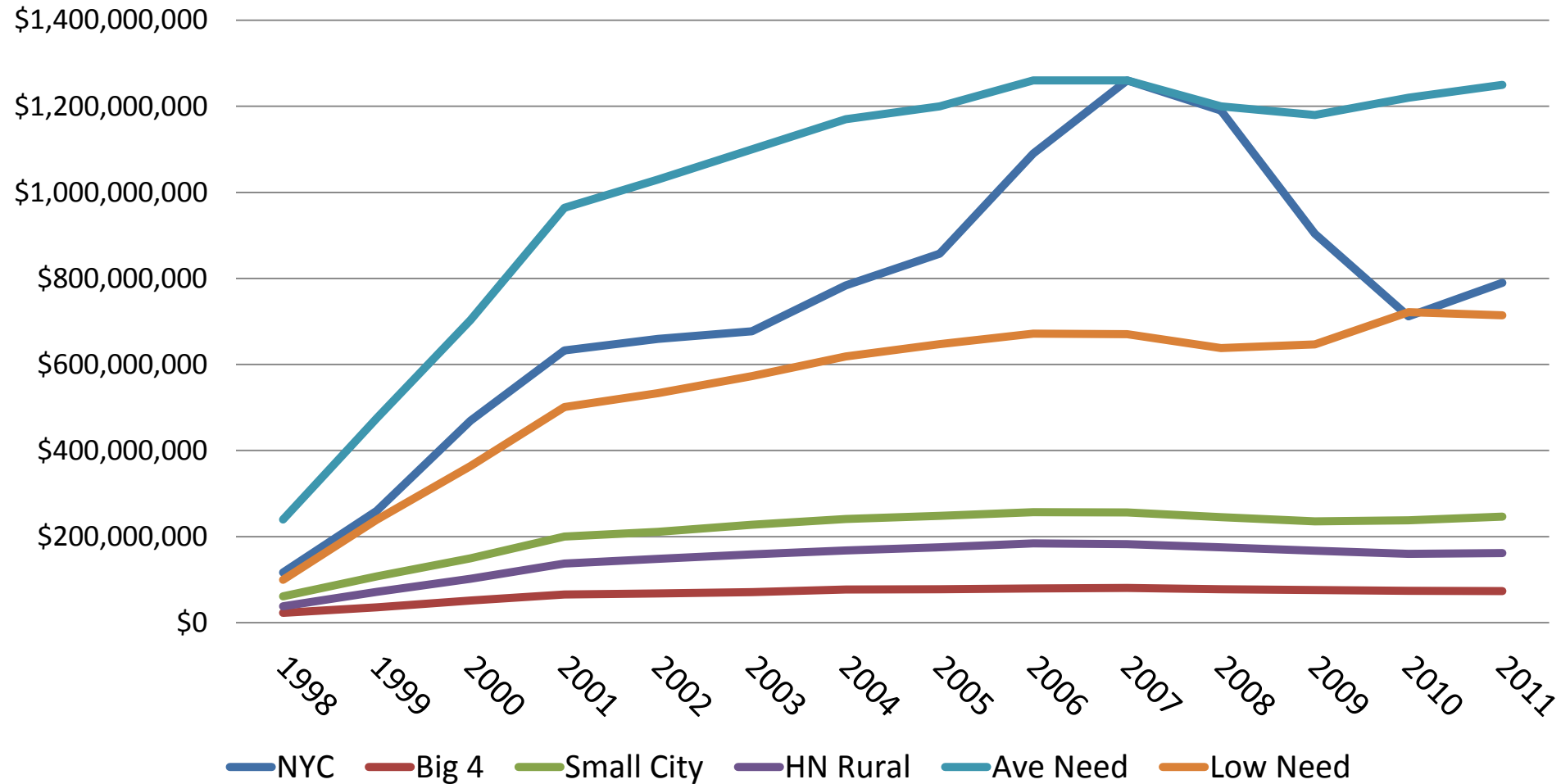
School_Local School_State



Assessed Property Value/Pupil



Total STAR Aid by Needs to Resource Capacity Categories



Unrestricted Fund Balance/Pupil for School Districts

